



UNDER THE K

New York City's first "el-space" park



NORTH
BROOKLYN
PARKS
ALLIANCE

ABOUT THE PARK



A PARK GROWS IN BROOKLYN

Located directly under the Kosciuszko Bridge and called "Under the K Bridge Park," the new park converts a formerly abandoned site into a vibrant seven-acre open space that invites the public to a little-known waterfront of Newtown Creek.

The space, designed by Toronto-based landscape architecture firm PUBLIC WORK, features expansive multi-purpose sections for recreation, culture, and woodland areas where more than 20,000 trees and native plant species now grow.

Under the soaring Kosciuszko Bridge columns, our "El-space" grows from 40 feet to as much as 100 feet in height. Distinguishing itself with massive industrial "rooms" connected by a continuous beam of light that runs the park's length, creating what we call a "solar slice."



WHAT'S AN EL-SPACE?

"EL-SPACES" ARE SPACES
BENEATH AND ADJACENT TO
ELEVATED TRANSPORTATION
SUCH AS BRIDGES, HIGHWAYS,
OR TRAINS.



WE CALL
THIS THE
"SOLAR
SLICE"



Born out of a community-driven design process that lasted two years, Under the K creates a collaborative space, unlike any other traditional park.

Under the K Bridge Park is State DOT property. Funded in part by the Greenpoint Community Environmental Fund (GCEFF). Administered, maintained, and programed by 503-C nonprofit, the North Brooklyn Parks Alliance.

WAIT! THE PARK IS UNDER A BRIDGE?

FOR THE MOST PART. YUP, THE
PARK IS UNDER THE BRIDGE.
HOWEVER, THERE ARE SEVERAL
SECTIONS THAT MAKE UP THE
PARK



7 ACRE PARK

6 DISTINCT SPACES

SKYLINE & WATERFRONT VIEWS

Kosciuszko Bridge connects Brooklyn to Queens with a modern cable-stayed bridge that features a generous 20 ft wide, 1.8-mile long bike & pedestrian pathway surrounded by city views

BRIDGE



Kosciuszko Bridge Plaza convenes at the base of the bridge on the Brooklyn side, providing several landscaped and restful areas for users coming off the bridge's pathways, the area's local streets, or before entering the park

PLAZA



"The Arm" is a linear promenade that ushers pedestrians and cyclists into the park space below the bridge. It meanders down through the IBZ zone, providing a respite from the surrounding area.

ARM





FLEX 1

A grand entrance to an e!-space, if there ever was one. Flex 1 is a multifunctional zone geared to rotating programming, community activities, and play. And is completely adored by the skater community



FLEX 2

An expansive and airy space with sunset & city views. This massive space can host large-scale events, performances, and recreation, unlike anything available in North Brooklyn.



CREEKSIDE

An intimate and reflective space with a natural amphitheater, Creekside celebrates a prime position along the water's edge with public outlooks and a restorative landscape of native creekside ecologies.

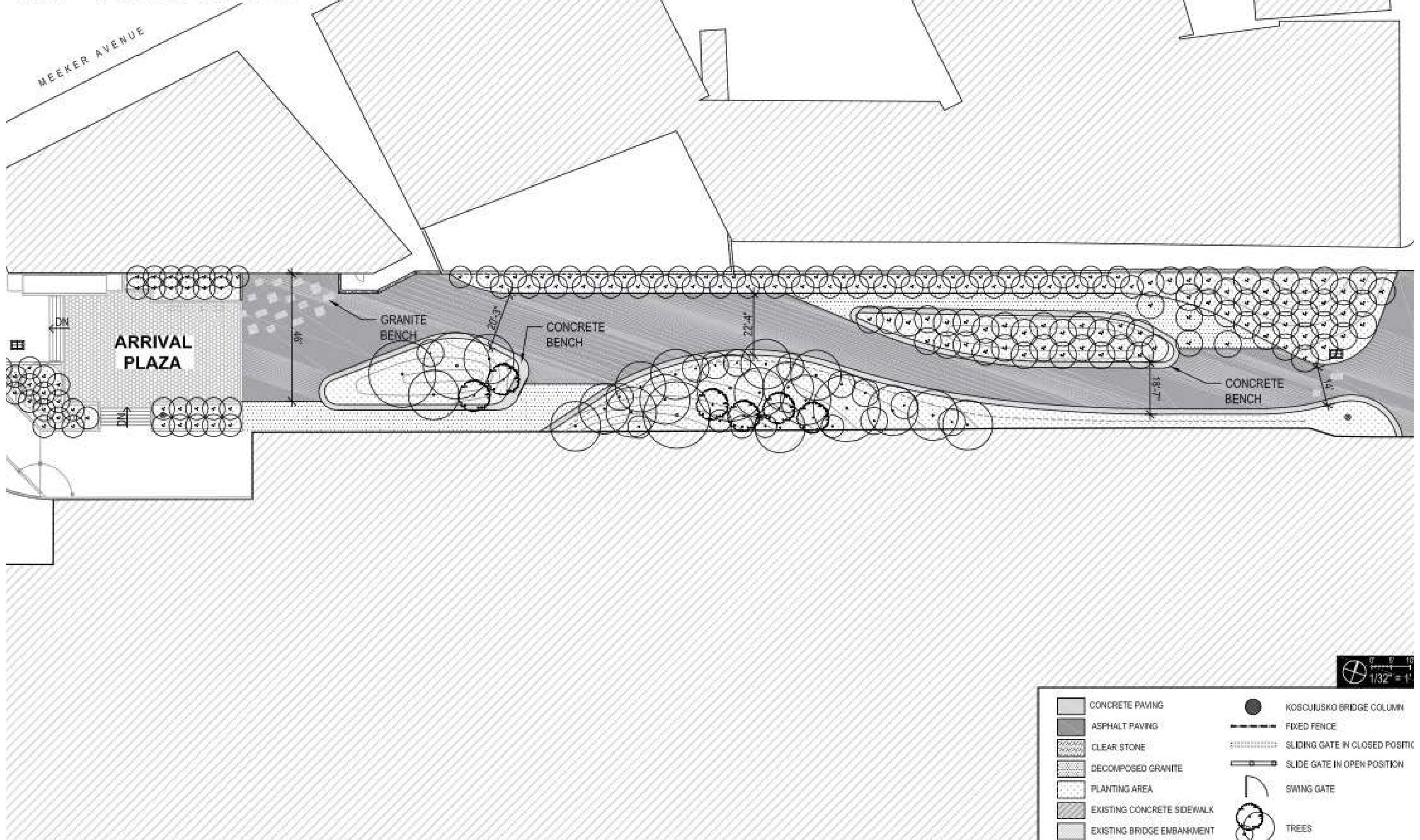
**15-20K
PERSON
CAPACITY**

**DAILY
WEEKLY
MONTHLY
RENTALS**

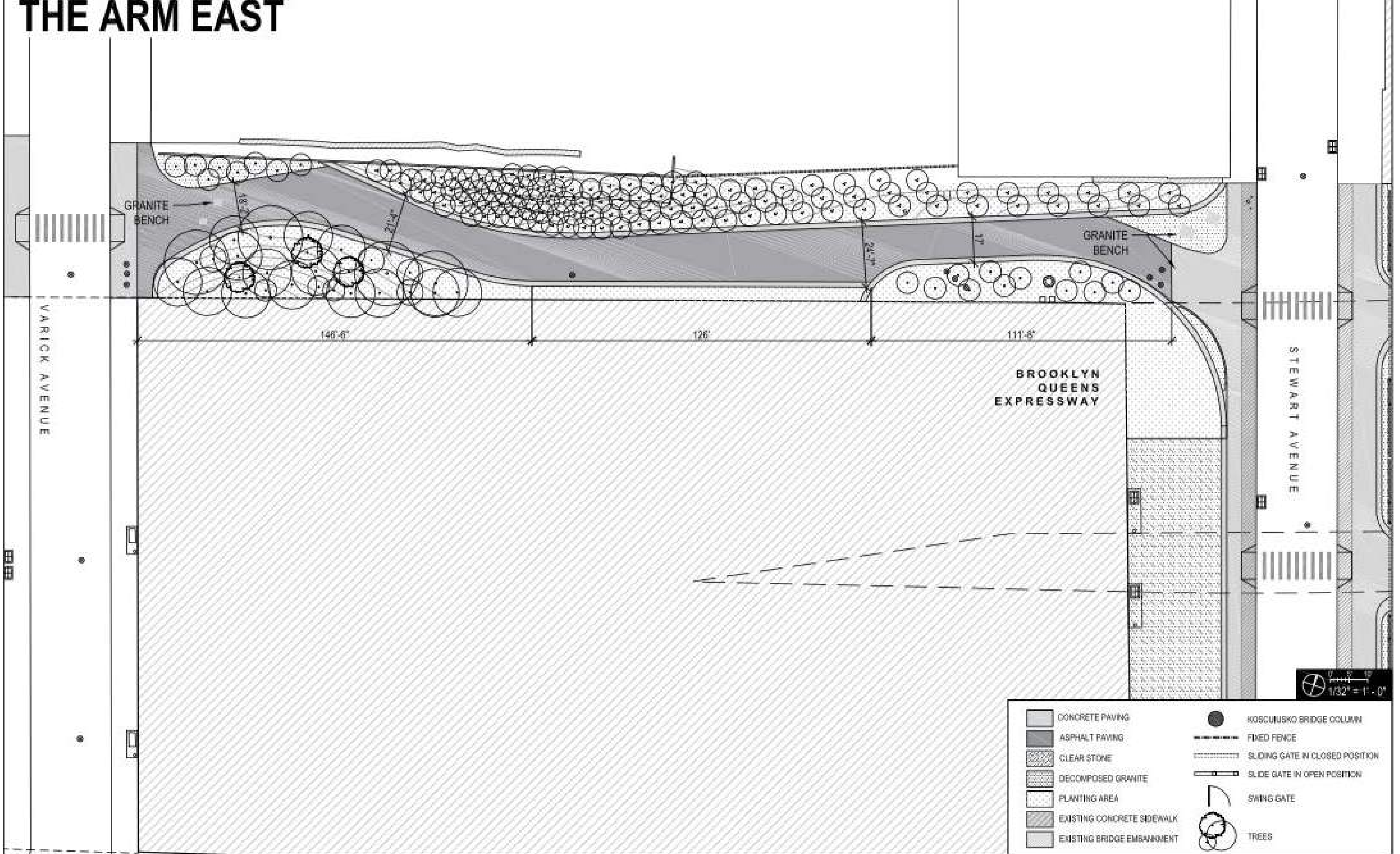


THE ARM

THE ARM WEST



THE ARM EAST



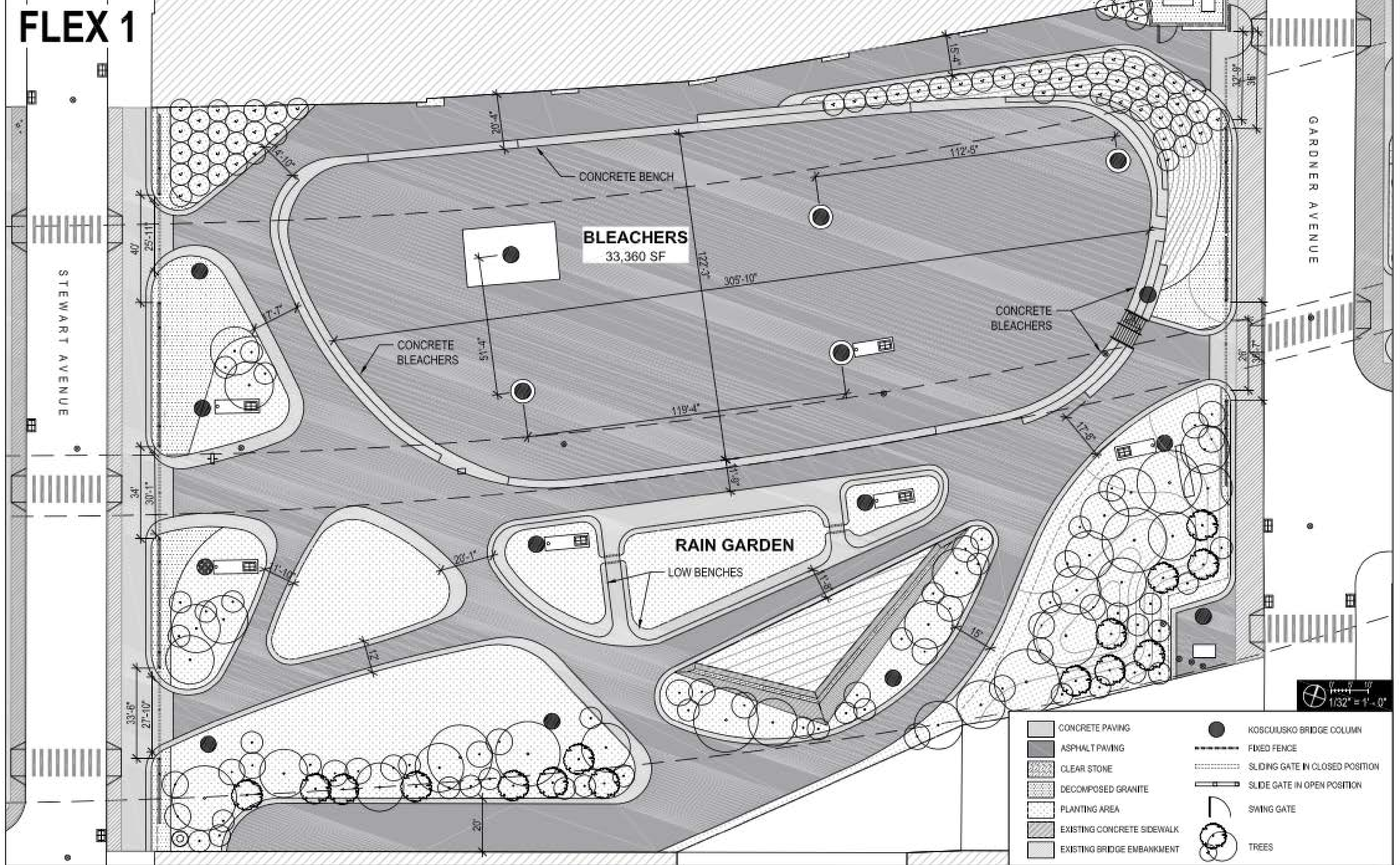
- | | | | |
|--|----------------------------|--|---------------------------------|
| | CONCRETE PAVING | | KOSCIUSKO BRIDGE COLUMN |
| | ASPHALT PAVING | | FIXED FENCE |
| | CLEAR STONE | | SLIDING GATE IN CLOSED POSITION |
| | DECOMPOSED GRANITE | | SLIDE GATE IN OPEN POSITION |
| | PLANTING AREA | | SWING GATE |
| | EXISTING CONCRETE SIDEWALK | | TREES |
| | EXISTING BRIDGE EMBANKMENT | | |



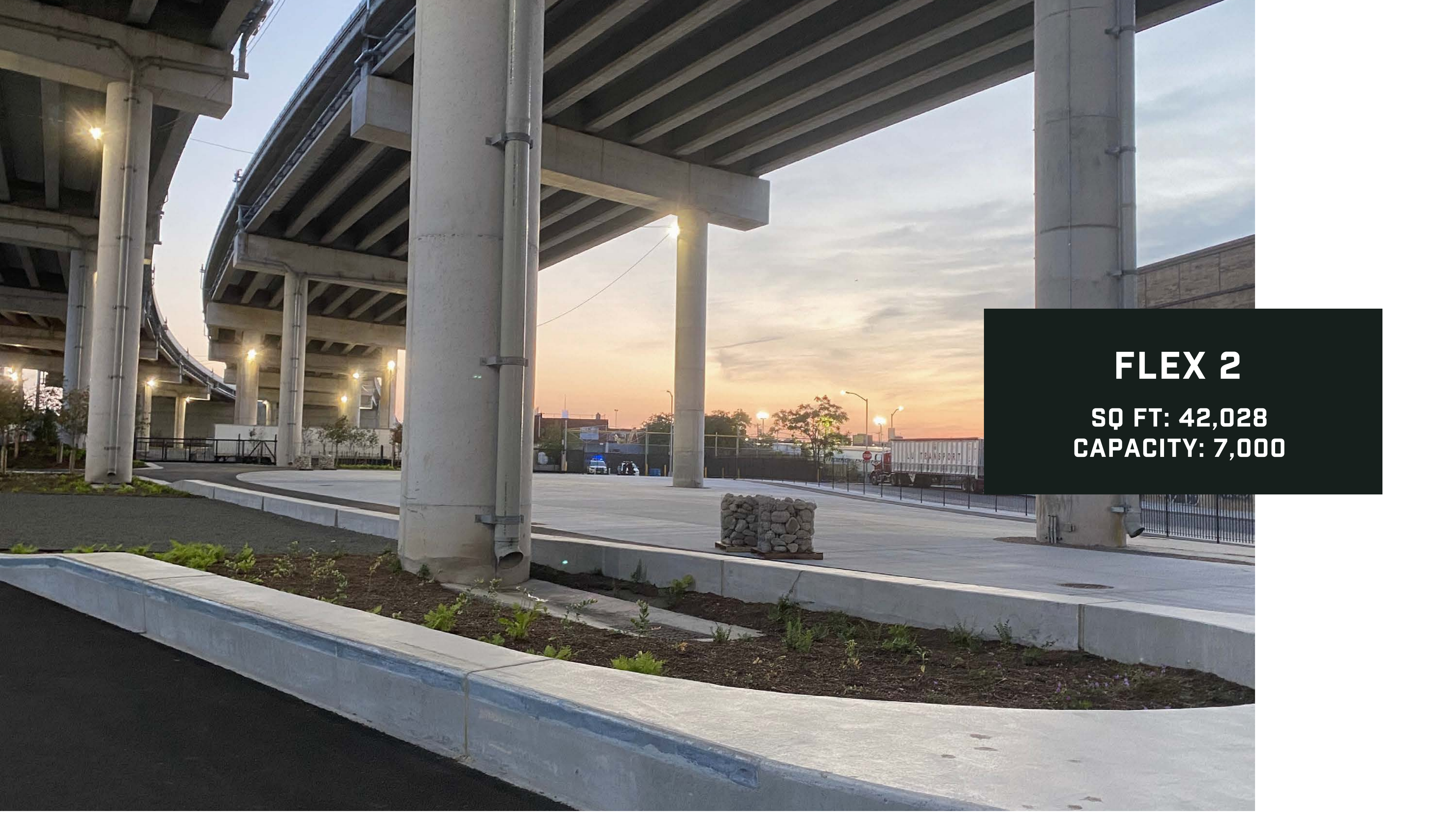
FLEX 1

SQ FT: 37,375
CAPACITY: 6,230

FLEX 1

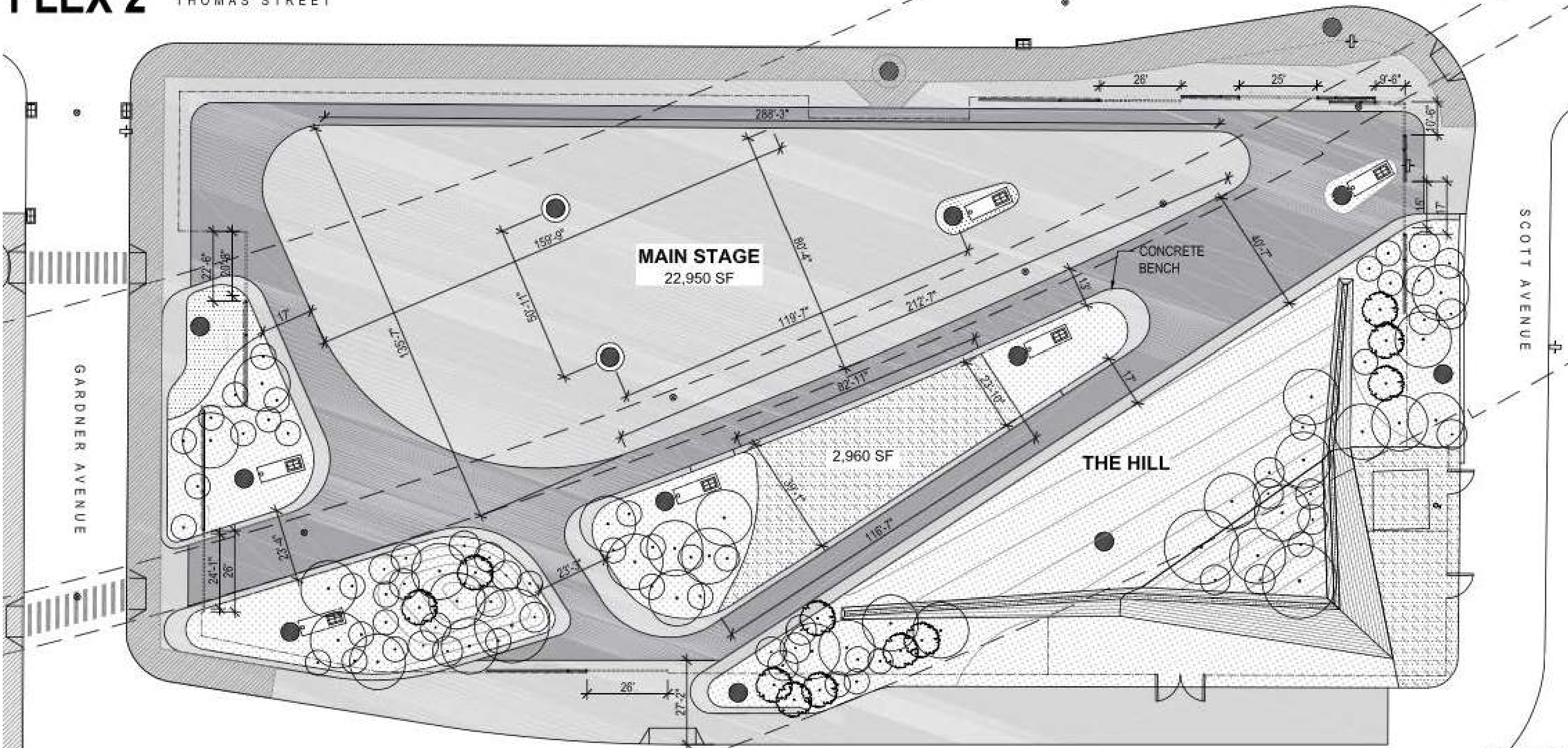


- | | | | |
|--|----------------------------|--|---------------------------------|
| | CONCRETE PAVING | | KOSCIUSKO BRIDGE COLUMN |
| | ASPHALT PAVING | | FIXED FENCE |
| | CLEAR STONE | | SLIDING GATE IN CLOSED POSITION |
| | DECOMPOSED GRANITE | | SLIDING GATE IN OPEN POSITION |
| | PLANTING AREA | | SWING GATE |
| | EXISTING CONCRETE SIDEWALK | | TREES |
| | EXISTING BRIDGE EMBANKMENT | | |



FLEX 2

SQ FT: 42,028
CAPACITY: 7,000



GARDNER AVENUE

SCOTT AVENUE

CHERRY STREET

MAIN STAGE
22,950 SF

2,960 SF

THE HILL

- | | | | |
|--|----------------------------|--|---------------------------------|
| | CONCRETE PAVING | | KOSCIUSKO BRIDGE COLUMN |
| | ASPHALT PAVING | | FIXED FENCE |
| | CLEAR STONE | | SLIDING GATE IN CLOSED POSITION |
| | DECOMPOSED GRANITE | | SLIDE GATE IN OPEN POSITION |
| | PLANTING AREA | | SWING GATE |
| | EXISTING CONCRETE SIDEWALK | | TREES |
| | EXISTING BRIDGE EMBANKMENT | | |

1/32" = 1'



CREEKSIDE

SQ FT: 18,444
CAPACITY: 3,074

CREEKSIDE

NEWTOWN
CREEK

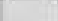

AMPHITHEATER
4,030 SF

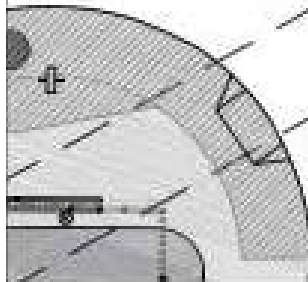
2,880 SF

GRANITE
BENCH

SCOTT AVENUE

1/32" = 1'-0"

- | | |
|--|---|
|  CONCRETE PAVING |  KOSCIUSKO BRIDGE COLUMN |
|  ASPHALT PAVING |  FIXED FENCE |
|  CLEAR STONE |  SLIDING GATE IN CLOSED POSITION |
|  DECOMPOSED GRANITE |  SLIDE GATE IN OPEN POSITION |
|  PLANTING AREA |  SWING GATE |
|  EXISTING CONCRETE SIDEWALK |  TREES |
|  EXISTING BRIDGE EMBANKMENT | |



THINGS TO CONSIDER

- TICKET SALES
- ONSITE VENDING
- FOOD & LIQUOR
- AMPLIFIED SOUND
- SECURITY PLAN
- INSURANCE
- GROUNDS CREW
- RESTROOMS
- STREET CLOSINGS
- TAXI STANDS
- PARKING

From intimate events to large-scale multi-day productions, Under the K Bridge Park has infinite possibilities. With the proper planning, the park allows vending, liquor sales, and amplified sound. Rental fees are determined on a case-by-case basis; we suggest a minimum of 30-90 days of advance planning.

With site plan approval, staging, tents, canopies, inflatable structures, banners, signs, projections, and/or balloons are permissible.

- At this time, a TPA (Temporary Place of Assembly Certificate) is **NOT** required.
- At no time, under any circumstance, can a projection or object enter the bridge space above
- At no time, under any circumstance, can any item pierce the bridge's columns.





Amplified Sound is permissible.

- Preferred hours are noon - 9PM.
- Extended hours will be granted on a case-by-case basis
- A sound permit from the 94th Precinct will be required.
- At this time, we do NOT offer electricity. Be prepared to bring the appropriately sized generator(s) for your event
- Generator placement must be approved in site plan.

Vending is permissible in the park.

- Merchandise sales or fundraising events are permissible; a copy of your Incorporation papers and or Sales Tax information will be required.
- Alcohol, Beer & Wine sales are permissible with an approved SLA permit & security plan.
- Food sales are permissible with an approved Catering Permit & current Health Department catering license

The park can be rented in its entirety or by parcel.

- Rentals are possible on major holidays or holiday weekends.
- It is possible to "activate" the Creek; this will require working closely with the Coast Guard for permits and safety protocol.
- Your event must be staffed, including but not limited to grounds crew, site ambassadors, greeters, traffic control, and security staff.
- There are no bathrooms onsite; the event must provide facilities.
- Trash & recyclables will not be allowed to gather. A grounds plan will be required.
- Vehicles are permitted on parkland ONLY with special permission.
- Street parking is limited; a traffic plan will be required.
- Street closures are possible with Street Activity Permit Office (SAPO)

